

34



PSYCHIC RESEARCH NEWSLETTER

Vol. 7 No. 5 Sept. - Oct. 1990

LUMINESCENCE: THE INNER LIGHT

by Marcel Vogel

This article will deal with the power of our mind to release light from within, also called luminescence.

When one fixates the mind on an object and looks at it in depth, a linking takes place between the individual and that object. This linking is called the QUANTUM EFFECT. This means that the normal energy wave motion that exists in and around the object, is quantized, or brought into packets. At this point, an informational exchange takes place and, if appropriate, the object emits light or luminesces.

Every living cell emits a light which is essential for intercellular communication. When the body is disturbed due to stress or "dis-ease," this light is diminished and, on occasion, even goes out. This light I am referring to is a cold light, a luminescence generated not by heat, not by electromagnetic radiation, but by Prana or Love.

In March of 1987, I had the privilege of visiting with Professor Fritz Popp in Germany,

and observing the work he was doing involving bioluminescence. He had special equipment set up and was measuring the amount of light being emitted from a vital seed, namely cucumber. He was measuring and counting the light emission coming from the seed.

Counts were taken over a period of three hundred seconds and were summarized and then recounted. I asked Dr. Popp if I could experiment using the Omega 5 unit to measure the field around a cucumber seed. I then asked if he and his assistant would measure the luminescence coming from the seed.

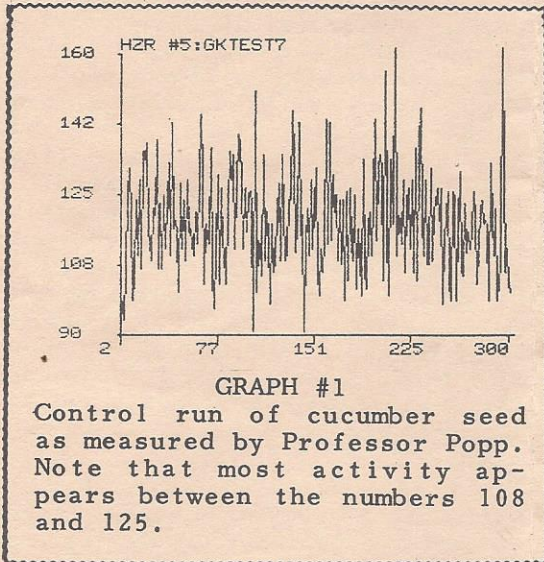
He agreed and we went to work. Graph #1 shows the luminescence output of the cucumber seed as measured by Professor Popp, using his equipment. The assistant then gave the seed to me. I held the seed between my thumb and forefinger, drew my breath in, created a cone of light and love and pulsed my breath into the seed. I did this once and then measured the seed on the Omega 5. The measurement readings showed an increase in energy over the readings obtained previously by Dr. Popp.

The assistant took the seed

(continued on page 2)

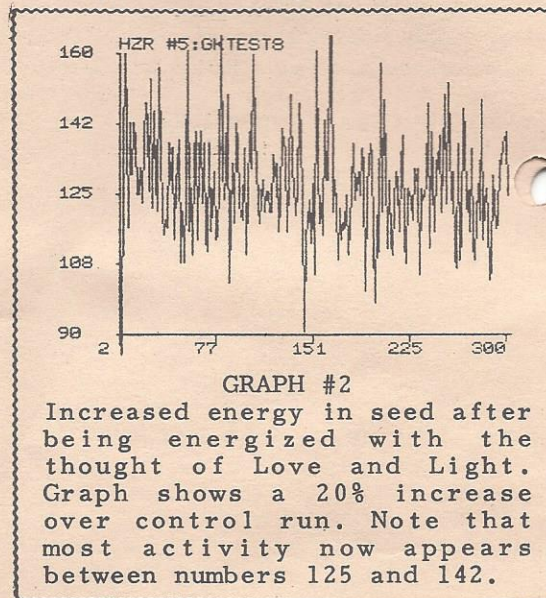
(continued from page 1)

and, using Popp's equipment under exactly the same conditions as before, measured the energy of the seed. The results are shown in Graph #2. The result was a 20% increase in light output over the original sample. In other words, the seed had taken on more energy and reflected this energetic increase as light, a LUMINESCENCE.



This was a prime example of the CONVERSION OF LOVE INTO LIGHT, as measured on scientific equipment by Dr. Popp and his staff.

Yes, we do effect one another by our thoughts, but above all, when we think of another in a loving manner, we give to that person a Light, a vibration, which increases the Light within that person's body.



Professor Popp asked me if I could remove the energetics from the seed. I said I would try. I held the seed in my hand, focused on it, drew my breath in and held it, and then handed the seed to the assistant. The thought in my

(continued on page 3)

PSYCHIC RESEARCH, INC. NEWSLETTER © VOL. 7 NO. 5, September/October, 1990. Published six times per year. Editors: Dr. Marcel Vogel, Katy Salazar and Jennet Grover, P.R.I., 1725 Little Orchard St. Unit C, San Jose, CA, 95125, 408-279-2291. Subscriptions are \$35 for 12 issues in the United States (see order form for rates outside the U.S.). Back issues are \$4 each. Psychic Research, Inc. is a non-profit corporation using scientific research and education to aid all life.

(continued from page 2)

mind was to empty the seed of the energetics it contained.

The seed was measured on the Omega 5 and showed a lower value than the previous measurements. I do not have the values at present from the Omega 5 readings.

A run was made by Professor Popp's assistant in my presence and it returned to the same value as it was originally. I later learned from one of Popp's assistants that a subsequent reading was made after I left and it showed a 20% drop below the normal value of the seed. In summary, we got a total change of forty percent of light output in the seeds, created purely by intention. This is an excellent example of the quantum effect, the power of love and, above all, how we effect every thing around us, especially ourselves, with our thoughts.

When Christ lived on this earth plane, he spoke again and again about knowing and loving ourselves. When we give that proper recognition and respect to ourselves, we ignite a flame, a luminescence in every cell of our body. This luminescence helps to burn away doubts, anger, pain and fear. The finest medicine we have on this earth plane is Love. It transcends any chemical, drug or therapy that the mind of humanity has ever conceived.

God love each one of you.

WE ARE LOOKING FOR CURRENT DISTRIBUTORS OF EUROPEAN VERSIONS OF OUR VIDEOS. WE WANT TO ADVERTISE THEIR WHEREABOUTS FOR OUR FOREIGN SUBSCRIBERS. THANKS.

A POEM

Author Unknown

I asked God for strength,
that I might achieve....
I was made weak,
that I might learn humbly
to obey.
I asked for health,
that I might do greater
things....
I was given infirmity,
that I might do better
things.
I asked for riches,
that I might be happy....
I was given poverty,
that I might be wise.
I asked for power,
that I might have the
praise of men....
I was given weakness,
that I might enjoy life....
I was given life,
that I might enjoy all
things.
I got nothing that I asked
for, but everything that I
hoped for.
Almost despite myself,
my unspoken prayers were
answered.
I am among all people,
most richly blessed!

PLEASE NOTE THAT DUE TO RISING COSTS OF DOING BUSINESS, WE HAVE RAISED THE SUBSCRIPTION RATE OF THE NEWSLETTER, THE FIRST RATE INCREASE IN OVER SIX YEARS. WE ARE ALSO INCREASING SHIPPING AND HANDLING FEES FOR PRODUCTS BOTH WITHIN AND OUTSIDE THE U.S. COST FOR MAILING THE NEWSLETTER IS INCLUDED IN THE SUBSCRIPTION RATE.

EXPERIMENTS

THE EFFECT OF VARIOUS SYMBOLS
AND COLORS ON FOOD

EXPERIMENT #85

Materials Required

*Two ripe bananas
Light-weight cardboard*

Cut the cardboard into five, 2-inch square pieces. Cut a small hole in each square using different shapes, i.e. cut a circular hole in one, a square in another, a triangle, a six sided hole and lastly cut out a random shape. Slice the bananas into 1/4" or 1/2" pieces.

Place the cardboard piece with the circular hole over a section of banana and project the thought of love and well being for one minute. Taste the treated portion against the control sample. Repeat the same using the square and triangle and other shapes. You will discover that one of these shapes has a larger capacity to store your thoughts and energy. This is due to shape geometry. What we are looking for is the influence of a geometric form on the capacity to store and hold a pattern of thought.

WE ARE HOPING TO SEE THE AVAILABILITY OF MARCEL'S BOOK, ENTITLED "MARCEL VOGEL: ON CRYSTALS," IN MID 1991.

EXPERIMENT #86

Materials Required

*Same as above
Light source with colored filters*

Using a light source with red, green and blue filters, illuminate each of the samples that have been cut for one minute with red, green and blue light and see if there is a change in the taste. Treat only one half of the sample. Place the other half on a sheet of whitepaper and mark them appropriately.

Observe from day to day those samples which show the least sign of deterioration. When this is found, combine the thought of love and color and the idea of stabilizing the food and see how long and well this segment of banana is resistant to the normal processes of breakdown and deterioration.

I would love to read about your results with this experiment. I encourage you to write in and share your knowledge with our wonderful editor. She, in turn, will be happy to transmit it in an upcoming issue of our Newsletter.

RECOMMENDED READING

THE COSMIC PULSE OF LIFE, by Trevor James Constable, Borderland Sciences Research Foundation, P.O. Box 429, Garberville, CA., 95440, 1976.

Trever James Constable has put a book together that is a total surprise! In the third chapter he brings to focus the difficulty one encounters in the excessive opening of one's psychic faculties and what is required to bring things under control. For this insight alone, the book is worth its weight in silver.

The author provides explicit information on how we can photograph space critters with Infra-Red film. Not all objects moving around in space are from other planets.

Constable was a close follower of Dr. Wilhelm Reich and personally knew Ruth Drown. His discussions on the experiences he had with each of these persons is very meaningful.

The powering of a UFO is covered as well, and a number of pictures are shown at the end of the book. This book will provide many long hours of discussion especially with those who believe they know what UFOs are. He writes well, clearly and to the point. A good book.

CRYSTAL KIDS P.L.A.Y. BOOK, By Marsha Singer, P.L.A.Y. House, P.O. Box 189, Pacific Palisades, Ca., 1989.

This delightful children's coloring book is a wonderful instructional tool that provides a fun way to introduce the world of

crystals to a child. It gently guides the imagination through suggestion and realization, assuring the child that "Crystals, just like animals and people, are a part of nature." Meditation and color breathing are some of the topics covered in loving detail. This book also encourages the acknowledgement and opening of some of the subtler senses. In all, a delightful presentation.



Marcel Vogel with Barbara Brennan, (left), author of HANDS OF LIGHT, and her assistant, Marjorie Valerie (right), in front of P.R.I.

HEALTH, LONGEVITY AND AGE REVERSAL

by Dan Zavela

Dan serves on P.R.I.'s Board of Directors as Recording Secretary/Treasurer. He holds a Master's Degree in both Public Health and Regional Planning and works as a Computer Programming Consultant in San Jose, Calif.

"Physically immortal cells that don't die;" "accurately predicting an individual's susceptibility to specific diseases;" "age regression of 20 years in 60-year old men over a six-week period."

These are not phrases lifted from a New Age "wish list," nor from some ancient Tibetan Sanskrit text. In fact, they are quotes from a recent Nobel Prize winning experiment, a current proposal to map the human genotype, and from a major drug company's experimental results, in July, 1990, with a synthetic growth hormone, all as quoted in your local daily newspaper. What's going on here?

It is believed by many that death is inevitable, disease can't be predicted and heart muscle deteriorates with age and can't be reversed. Wrong! These beliefs are no longer true. What alchemists were burnt at the stake for believing in the Middle Ages is now scientific fact in 1990.

The days of clandestine research in the area of life extension are over. The light of day is now illuminating all empirical research of this type. There are exceptions, such as Dr. Pat Flanagan (Vortex Industries, Flagstaff, Arizona), who claims

significant beneficial health effects from his "Crystal Energy"^R water; but he hasn't published his multi-step process; nor does he invite interested scientists to his laboratory. Why not?

Dr. Flanagan claims to have found the secret of the 150 plus year life span of the Hunza people in their consumption of colloidal crystal solids in their glacier-derived drinking water. Dr. Flanagan's water, he claims, washes the body's cells of waste products, thus replicating in the living body the immortal cell experiment that recently won a cancer research scientist a Nobel Prize. (But where is Dr. Flanagan's research data, his controlled experiments and methodology? Dr. Flanagan won't say).

Dr. Marcel Vogel, with studies of water structuring by means of a technique involving crystals and subtle energies, has an open laboratory and will speak with any sincere researcher committed to finding the truth. Dr. Vogel has succeeded in harnessing crystals to convert love-directed thought into photons (light energy), life energy and has raised the vibration of physical substances into a higher dimension of existence. Water treated by the Vogel Crystal Process is measurably different in pH value, O-H spread, UV and IR electromagnetic values and taste.

Both Dr. Flanagan and Dr. Vogel have discovered that a vortex in the fluid facilitates energy transfer. Dr. Flanagan's liquid crystal water has a high vibration rate as measured by a Copen radionic instrument. What does this mean? The time for

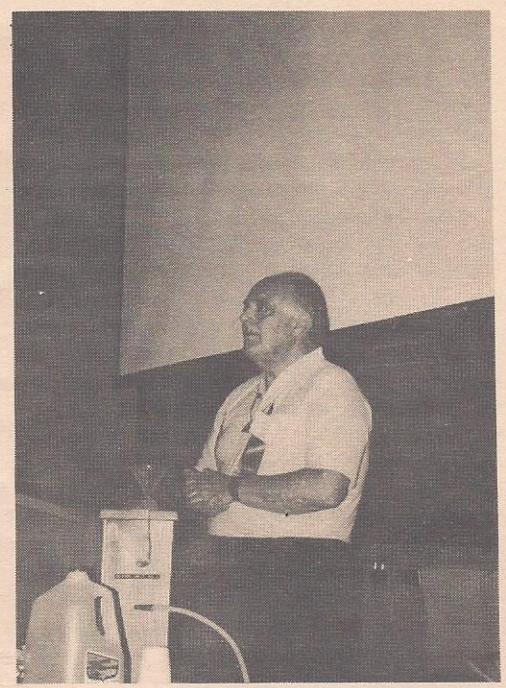
secrecy is over. The time for open, honest, empirical scientific research should begin in earnest.

Where is all this activity leading to? Physical immortality? "Why would anyone want to be immortal?" the Boston Globe asked in 1988. Physical immortality is freedom from disease and the conversion of the carbon-based flesh into a light body as alluded to by the visions Marcel and his friends recently had in Egypt in the temples and pyramids they visited.

Enlightened beings have a choice to make; they can die and, by leaving the body, return to the source of their being (yes, there is a happy, restful place called Heaven); or they can choose to purify and integrate the body, mind and spirit into an immortal body. This latter path has been selected by St. Germain, Fulcannell, Babaji (Paramahansa Yogananda's guru), Mohammed, Shou Lao and Jesus Christ.

Whichever path you choose, wouldn't you prefer to live a vital, disease-free life? The healing effects of crystal-amplified thought and the benefits from crystal-charged water, which Dr. Flanagan says he can't produce in stable form (although Dr. Vogel can), deserve controlled, open experimentation.

Help Dr. Vogel to help you contribute to a better present and give shape and reality to a new future of health, prosperity, happiness, love and enlightened living. The Marcel Vogel Research Endowment Fund is your perpetual vehicle to crystalize continuous progress into forever.



Marcel Vogel addressing an audience at the July, 1990, West Coast Dowser's Conference held in Santa Cruz, California. In front of him stands one of our water structuring units which he demonstrated at this conference.

IN A MATTER OF JUST A FEW MONTHS THE HOLIDAY SEASON WILL BE UPON US. OUR CLEAR CRYSTAL QUARTZ MEDALLIONS MAKE BEAUTIFUL GIFTS. IN ADDITION TO BEING STUNNING PIECES OF JEWELRY, THEY PROVIDE PROTECTION TO THE WEARER FROM UNWANTED ENERGIES. CUT IN THE SHAPE OF A TRIANGLE AND WORN OVER THE WITNESS AREA (THYMUS GLAND), THE MEDALLION MAY BE PROGRAMMED WITH ANY THOUGHT OR INTENTION.

CRYSTAL ENERGY WORK IN GERMANY SPRING 1990

by Ron Carson (Rumi Da)

The focus of this particular trip was to network with various individuals and plant the seeds for further growth and evolution. For example, upon arrival in Worpswede, just outside of Bremen, we stayed with Gudrun Laves, a healer and friend of Marcel. Later we connected with Peruvian Shaman Intl Cesar Malasuez, and now plans for a pilgrimage to Machu Picchu, Lake Titticaca and Nazca are in the works.

"Old Friends" seem to appear in the most unexpected places. Perhaps this "Journey to the Stars" will bring together many more such "old friends" in reunion.

As usual, our return to Dusseldorf was wonderful and exciting. We gathered first for a four evening intensive of meditation and to initiate a process of emotional clearing which proved to be powerful for many. This was truly a coming together for the core group of friends and workers who are active in this area.

Dusseldorf is a key focus for the work being done in Germany and it is a joy to see the flowering of group consciousness in response to the needs at this time.

In Krefeld, just outside of Dusseldorf, we were part of a symposium organized by Wulfing Krannenbroeker and his wife Diana Hartley. This event allowed us to do some important work in clearing certain energies imprinted in the area by events dating back to

Roman times and seemingly sealed by specific acts committed during the Third Reich. We began the process of clearing the area, as well as ourselves, of these heavy and oppressive energies.

This was an opportunity to experience the possibilities of a unified group focus. This is a work that will need to be done more and more in these days of change in Europe.

In the recent past, as well as in ancient days, many individuals have been consciously and powerfully involved with the darker side of "the work." It is now time to release these patterns and allow the energies of Love and Light to manifest more fully.

It seems that each of us have patterns of separateness we need to release in order to allow more Love and Light. This is particularly true with the group focus.

Upon returning to Dusseldorf, we had a one day session of meditation and healing. At this time we were able to use a meditation crystal cut by P.R.I.'s Drew Tousley specifically for this group focus. We also had the great assistance of being able to use the Kirlian photographic process to determine the effectiveness of our individual treatments and group meditations.

With this process the results are immediately visible in the coronal discharge from the fingertips of the individual being treated. This was an opportunity for us to gain greater confidence in our abilities to effect change and transformation and make the necessary adjustments or refinements in those areas where we need fine tuning.

We discovered it is the relationship of loving concern and caring that is more important than technical prowess. The two must go hand in hand just as the energies of Love and Will must function together in order that we might be effective. It is my belief that Love is given direction by Will, but the energy of the Will must be guided by Love to be of true healing service.

Virtually all of the participants in this intensive experienced a major strengthening of the Heart meridian as shown by the Kirlian process. Many were very impressed by the visible results of the work. It was a confirmation of the process of bringing the energies of the Soul into manifestation through the Heart and allowing the process of healing to unfold.

Our travels took us to many places during our 13 week stay. In Munich, Herbert Hoffman organized an exciting weekend of fun and learning. During the previous seminar in Munich last autumn, Herbert demonstrated self-healing for us by using his own fractured foot for the process. (This was described in a previous Newsletter, Vol. 7 #1, Jan.-Feb., 1990).

The culmination of the tour was a week long intensive in the countryside near Seifen, just outside of Koln. It was indeed an intense time for the more than 25 participants. In addition to exploring crystal healing methods, we took many journeys in consciousness into the depths of the earth and out to the farthest reaches of space. The only limits are those we impose upon ourselves.

Throughout the week we discovered that the work of the "healer" is to be as a gardener. This work includes preparing the soil, planting the seeds, providing the necessary nourishment and basically maintaining the appropriate environment in which the natural and spontaneous processes of growth can emerge. Of course, sometimes it's necessary to assist in uprooting a few unnecessary weeds or to remove an occasional rock, if they occur.

During the week we all shared in learning these skills and watching them in action. It was very rewarding to know that from this week, we would all go our separate directions and be able to share what we had learned and experienced with others. We've received several letters indicating that the impact of the intensive is still very much alive in people's lives and that they are indeed able to put what they have learned into practical application.

It is in this way we can all help to restore this garden of Earth and assist in bringing balance and well-being during these critical times.

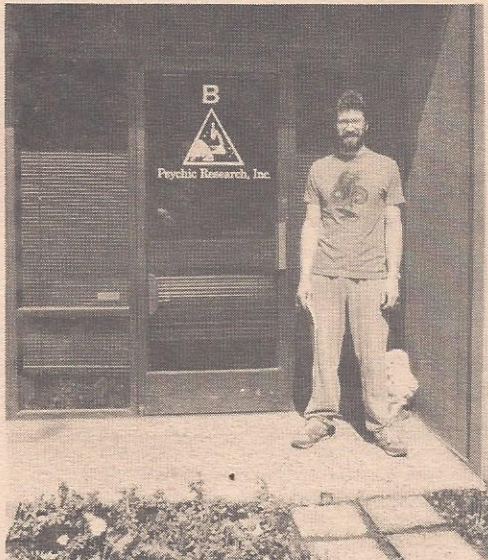
Together we are learning what is required of us to bring the work that we seek to offer into manifestation.

As we move into the 90's, the European community is going to become increasingly more important and as we watch the walls and borders between various countries disappearing, we can see this both as actual and as a metaphor for the possibilities within each of us. Our existence

(continued on page 10)

VOLUNTEER HIGHLIGHTS

P.R.I. wishes to acknowledge Edmond Rub, of London, England. Edmond arrived in May and has been volunteering his time assisting Marcel in various projects. He has worked on the portable water structuring units and conducted plant experiments using structured water.



Edmond Rub standing in front of P.R.I.

When asked why he came to P.R.I., Edmond responded that he was inspired by "Marcel's belief in the power of crystals for spiritual and technological growth."

Back home in London, Edmond was Science Editor for a new age magazine and worked on various computer projects and products.

"My goal," says Edmond, "is to

work in an area that is beneficial to the environment and all life on earth. I hope to use some of the experience and wisdom I've gained from Marcel in my personal and professional life in London."

Edmond returns home in October. We will miss him very much!

(continued from page 9)

as separate individuals is only apparent.

I would be remiss not to mention the great assistance given to me by many people who helped make this Germany tour a reality. Thanks are due to Wulfing and Diana for their commitment to bringing people together for the symposium in Krefeld.

Our thanks to Ursula Ammerman-Bienfeld and Alain Lerner for giving us an opportunity to see the photographic and energetic results as shown by the Kirlian process. We look forward to working and growing together again.

Great assistance was given by Sappira Wentzel of Dusseldorf. Much of our work would not have happened if it were not for Sappira.

And finally, it was wonderful working with Wolfgang Erdorf, of Koln, head of our European management and coordinator of this tour.

Ich liebtedich! (I love you)!

Ron is a certified Vogel Healing Instructor, a spritual counselor, author and director of Lifestream Associates in Winter Springs, Florida.

~~~~~  
MARCEL VOGEL'S 1990-91 SEMINAR SCHEDULE

OCT. 27-28 CALGARY, CANADA Two-day Seminar/Workshop. \*\*CREDIT CARDS WILL BE ACCEPTED.\*\* Contact Rosalind Dunn, 403-283-8017, or write 2211 Third Ave., N.W., Calgary, Alberta T2N 0K7, Canada.

JANUARY 24 YUBA CITY, CA. U.S. Psychotronics Association. Contact LaVerne Denyer at 916-674-7090.

MAR.9, 1991 SANTA CRUZ, CA. Full day workshop at Pacific Cultural Center. Call 408-426-8893.

MAY 17-19 MONTREAL, CANADA International Institute of Integral Human Sciences. Call 514-937-8359, or write P.O. Box 1387, STN.H, Montreal, Quebec H3G 2N3, Canada.

RON CARSON (RUMI DA)

FLORIDA

Crystal Energy Workshops

Call Ron at 407-699-1672

JUDY MINGO WORKSHOPS

Therapeutic Use of the Healing Crystal. Call Judy at 612-377-5657.

LINDA LAING WORKSHOPS -

Crystal Therapeutics: Healing and Being Healed With Crystals.

MONTHLY INDIANAPOLIS, IND.

Call Linda at 317-846-4632.

MONTHLY CINCINNATI, OHIO

Call Linda at 317-846-4632.

MELISSA REYNOLDS WORKSHOPS -

Crystal Therapeutics.

MONTHLY OLYMPIA, WA

Call Melissa at 206-264-5449.

CAROL THOMAS-KLAUSNER -

Vogel Crystal Healing Workshops.

MONTHLY PHOENIX, AZ.

Call Carol at 602-285-1628.

MARCH 1991 NEW YORK CITY

Crystal Healing II based on Marcel Vogel's Therapeutic Use of Crystals. This workshop consists of 3 parts, all of which are necessary to receive a certificate.

~~~~~

WE WOULD LIKE TO EXPRESS OUR THANKS TO THE FOLLOWING PEOPLE WHO HAVE DONATED THEIR TIME AND LOVE TO P.R.I. TO HELP US IN OUR RESEARCH: Robert Archer, Mike Devlin, George Dong, Mary Lamson, E. Don Rott, Edmond Rub, Carol Thomas-Klausner, Shulei Tong, Leonard Worthington, Clyde Wright, Mary Ying and Dan Zavela.

CRYSTAL THERAPY INSTRUCTORS: The following people can provide interesting and informative lectures on crystal healing. They have been trained by Dr. Vogel and speak knowledgeably in relation to their particular specialties. All of these instructors will travel.

ROZANNE BAZINET Ph.D. MFCC, Sacramento, Ca. 916-489-2256/RON CARSON (RUMI DA), Orlando, Fla. 407-699-1672/MARY GOODNER, Dallas, TX. 214-991-4168/WARREN KLAUSNER, Claremont, Calif. 714-621-7105/LINDA LAING, Indianapolis, Ind. 317-846-4632/JUDY MINGO, Minneapolis, MN. 612-377-5657/JENNET GROVER, P.R.I. staff./DALE OLSON, Eugene, Or. 503-683-8418/MELISSA REYNOLDS, Tenino, Wa. 206-264-5449/MELINDA SCHULTZ, Carbondale, Co. 303-963-3670/CAROL THOMAS-KLAUSNER, Phoenix, Az. 602-285-1628.

THANK YOU FOR YOUR GENEROUS SUPPORT AND DONATIONS. The P.R.I. research laboratory has been supported primarily by Marcel's lectures and by the sales of crystals, the medallion, newsletters and audio and video tapes. The more private funding, the more time Marcel will have to supervise and perform research in the laboratory. Remember, P.R.I. is a non-profit corporation which provides research and education to aid humanity. Won't you help us to help you?!



PSYCHIC RESEARCH INC.
1725 LITTLE ORCHARD ST. C
SAN JOSE, CA 95125

ADDRESS CORRECTION REQUESTED
 DATED MATERIAL/TIME VALUE

Non-Profit Organization
 U.S. Postage PAID
 San Jose, CA
 Permit No. 5445